

Facing brick external leaf with min 50mm cavity tied to specialist timber frame wall construction with proprietary ties in accordance with suppliers details and recommendations

New double glazed windows and doors installed with min 'U' value of 1.6 W/m<sup>2</sup>K

Facing brick external leaf with min 50mm cavity tied to specialist timber frame wall construction with proprietary ties in accordance with suppliers details and recommendations

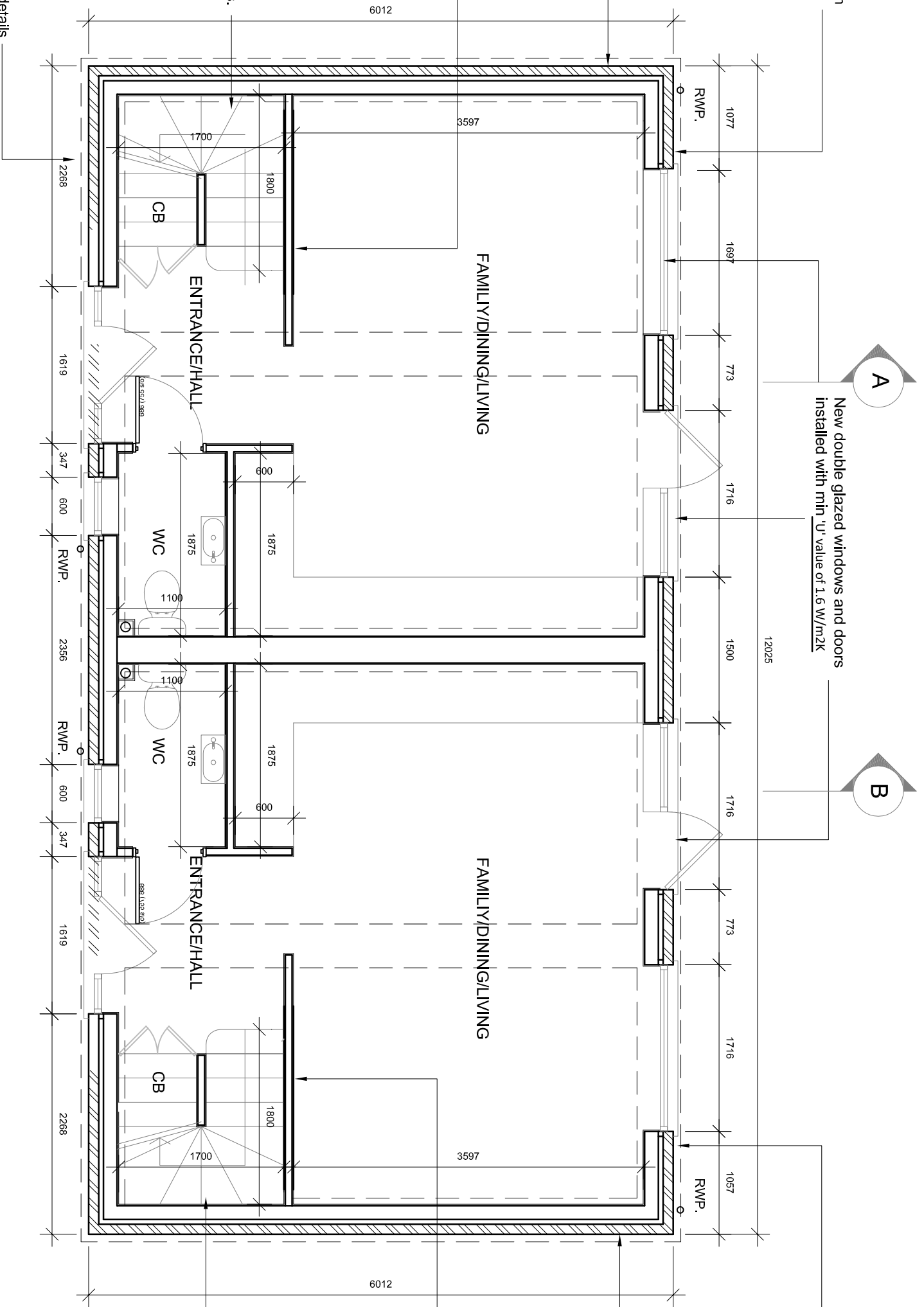
New partition walls to be timber studwork min 70mm studs with in 25mm mineral wool insulation with one layer of 12.5mm wallboard 10 or similar to achieve a mass of 10kg/m<sup>2</sup> either side with lightweight gypsum skim finish to achieve 43db type E1 wall.

New partition walls to be timber studwork min 70mm studs with in 25mm mineral wool insulation with one layer of 12.5mm wallboard 10 or similar to achieve a mass of 10kg/m<sup>2</sup> either side with lightweight gypsum skim finish to achieve 43db type E1 wall.

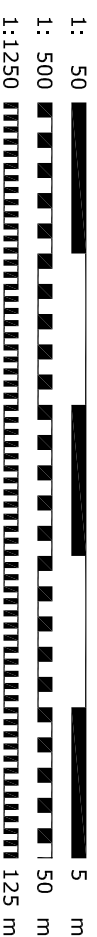
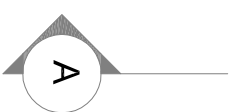
Winding timber stairs to have equal risers with rises 220mm max goings 220mm min with 42 degrees max pitch, min 75mm going on tapered treads, 900mm high continuous handrail and 1000mm high balustrade to landing Balustrade to provide vertical guarding to prevent a 100mm sphere form passing through min 2m headroom

Winding timber stairs to have equal risers with rises 220mm max goings 220mm min with 42 degrees max pitch, min 75mm going on tapered treads, 900mm high continuous handrail and 1000mm high balustrade to landing Balustrade to provide vertical guarding to prevent a 100mm sphere form passing through min 2m headroom

Piled foundations with ground beams in accordance with Engineers design and details



## Ground Floor Plans 1:50



Rev Date By Note

**BUILDING REGS**

Project	17 THE RYDINGS
WINDSOR	
SL4 4HF	
Title	PROPOSED DWELLINGS
	GROUND FLOOR PLANS
Drawing Number	1320/BR02
Date	JUN'16
Drawn	GP
Scale	As Stated
Paper	A3

**artichoke** : architectural consultancy

71 Clewer Hill Road - Windsor - SL4 4DE  
t: 01753 830 422 - m: 07793 318 035  
chris.dale@artichoke-design.co.uk

