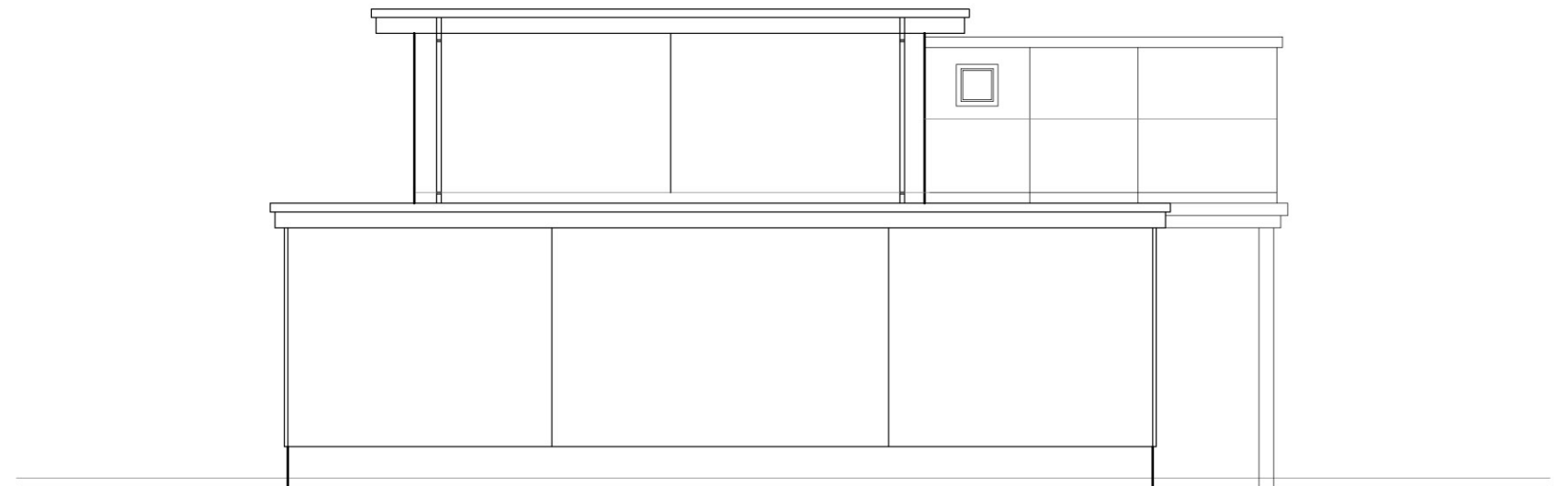


RETAIL UNIT
PROPOSED SOUTH WEST
FACING ELEVATION 1:100

composite grey panelling
dark red engineering brickwork
grey aluminium framed windows



RETAIL UNIT
PROPOSED NORTH WEST
FACING ELEVATION 1:100

Proposal for new
apartments and
metro supermarket

'The Plough'
36 Margate Rd
Broomfield

Mr R. & Mr A. Noel

Proposed retail unit elevations 1:100

dwg no. 477/08 issued 17th May 2017

preliminary

<p>PAUL WESTRUP architectural design & illustration 07960 99 33 47 pw@paulwestrup.com</p>
--